



Honey bees and WHY they are IMPORTANT!

(Northern Colorado Beekeepers Association)

Presenters: Clark's of Colorado ~ Clark & Sharry Sloan



The background is a close-up, slightly blurred image of a honeycomb structure. The hexagonal cells are filled with a golden-yellow liquid, likely honey, which has a glossy, reflective surface. A single bee is visible in the upper right quadrant, its body partially obscured by the honey. The lighting is warm, creating a soft glow across the entire scene.

**What do you know
about honey bees?**

What do we use or eat that's made available to us by honey bees?



HONEY, Of Course!



What else???

Honeybees make it possible for us to have all kinds of FOOD and other PRODUCTS we use every day!



In Colorado, honeybees are used to pollinate 30% of our commercial crops including **apples, cherries, peach trees, alfalfa, pumpkins, tomatoes, and melons**, among others. Colorado native plants also provide sources of nectar and pollen for honeybees.



How do bees help plants/food grow?



The background of the image is a honeycomb pattern in shades of yellow and orange. A bee is visible in the upper right corner, and a flower is in the lower right corner.

POLLINATION!!!

Busy as a bee...collecting pollen.



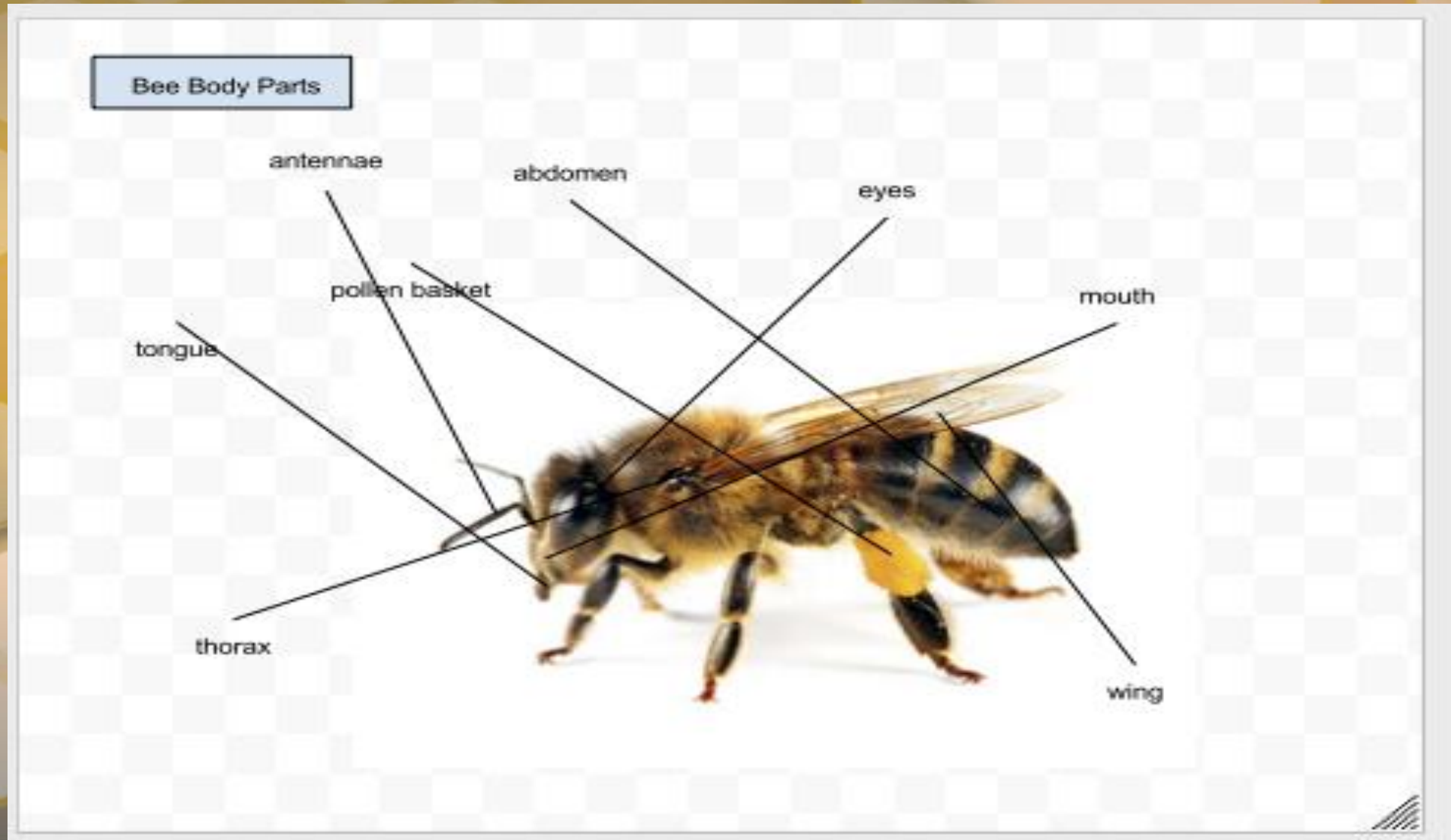
WHERE DO HONEY BEES LIVE?



Bee SWARM (leave them alone and they'll leave you alone)!

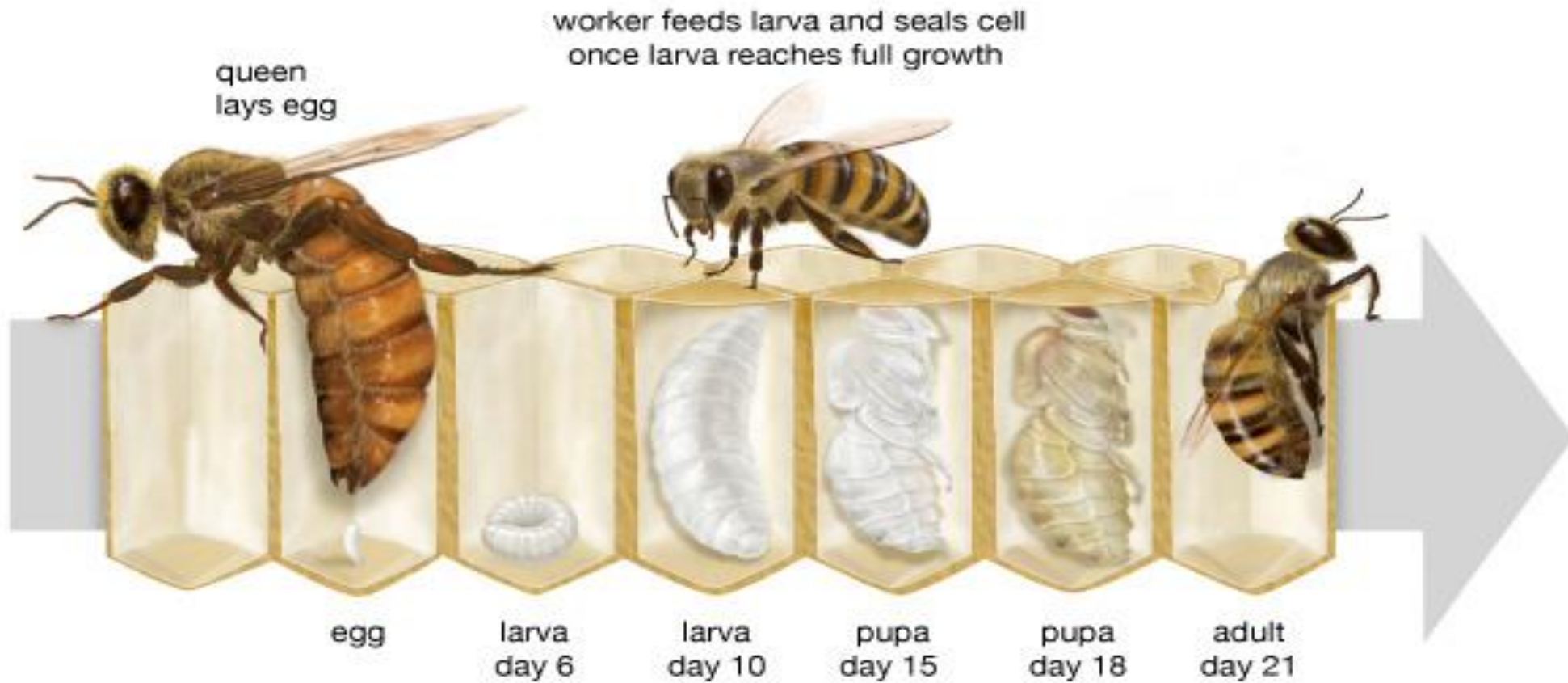


Bee Anatomy (body parts)



The Life Cycle of a Bee

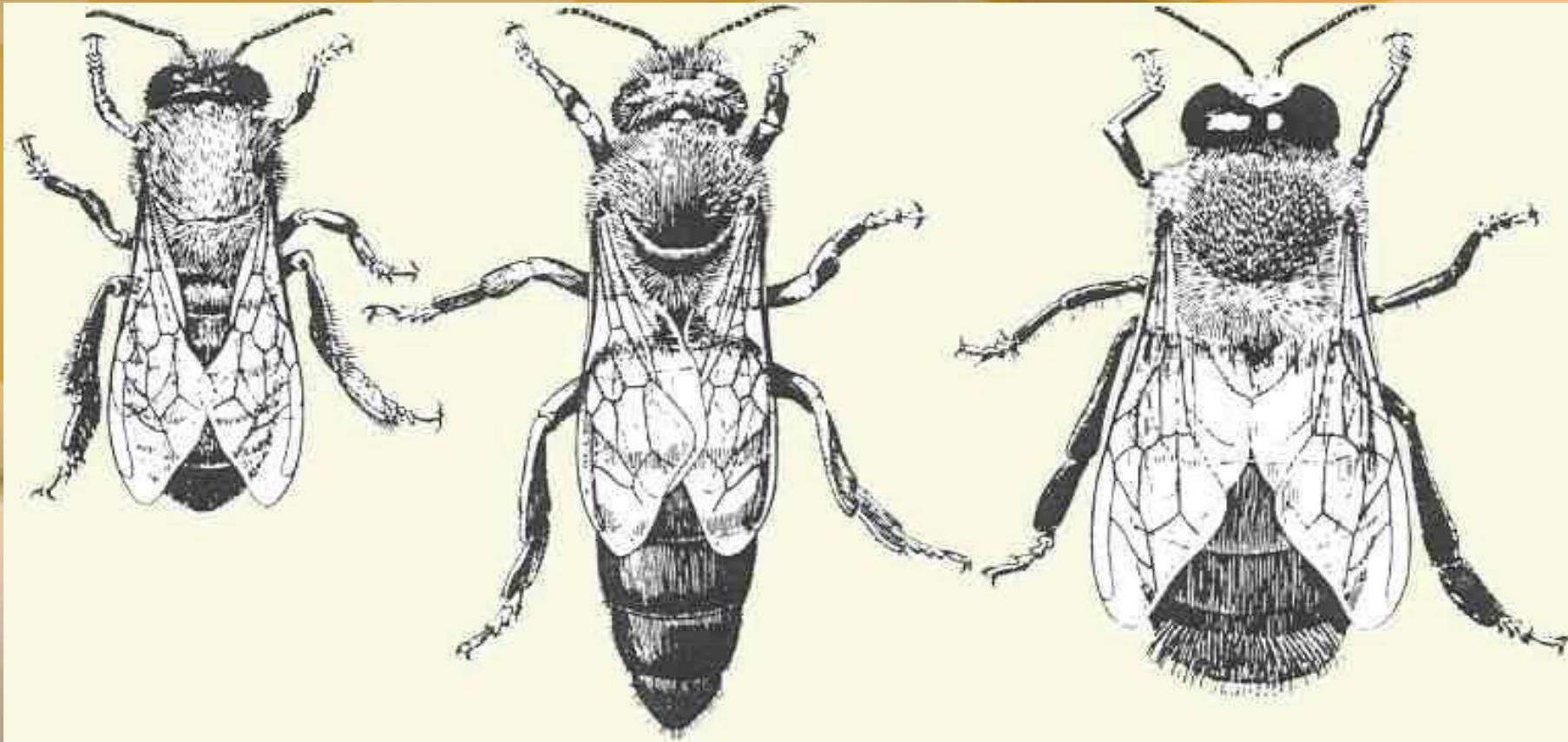
Life cycle of honeybees



Worker

Queen

Drone



A Bee's Gifts



Insecticides and Pesticides kill bees



Varroa Mites are hurting and may kill the bees. Scientists and beekeepers all over the world are looking for ways to protect the bees from these parasites!



WHAT CAN YOU DO?



Save the Bees



Stop using pesticides



Plant a bee friendly garden



Create a native garden



Buy local honey and bee products



Support your local beekeepers



Build your own native bee house

GREENPEACE

Beekeeping Supplies



~ YUMMY HONEY ~



THE END

